



MAGNET



2020-21 Healthcare Placements under the Student Work Placement Program

Rob Henderson, President and CEO, BioTalent Canada

Jim Babcock, Project Manager, Early Talent Initiatives, Magnet



Agenda

1. Magnet
2. BioTalent Canada
3. Student Work Placement Program (SWPP) Overview
4. SWPP Eligibility Requirements
5. Covid-19 SWP Program Changes
6. SWPP Healthcare Placement Overview
7. Healthcare Definitions
8. Program Application Information
9. Q&A

Magnet



- Magnet is a social innovation platform with a mission to accelerate inclusive economic growth in Canada. Magnet's goal is to empower individuals and businesses to grow, find their next opportunity, and succeed in a dynamic labour market.
- Magnet became a SWPP partner in 2019 and provides employers from all sectors and industries with wage subsidies to hire students from any post-secondary institution in Canada.

BioTalent Canada

- **The HR partner of and catalyst for growth in Canada's bio-economy.**
- **Deliver** Labour Market Information, National Occupational Standards, Talent Management and Professional Development
- **Provide** wage subsidies to biosciences and healthcare employers to hire STEM, business, healthcare or other students



Student Work Placement Program (SWPP) Overview

- **Connects** employers, students, and post-secondary institutions.
- **Creates** (and sustains) quality work-integrated learning (WIL) opportunities.
- **Provides** employers with wage subsidies to hire students:
 - **75% up to \$7,500**
- **Gives** students quality work experience so they can secure employment in their chosen fields of study.

SWPP Employer Eligibility Requirements

- Registered Canadian businesses, not-for-profits, hospitals, long-term care facilities and post-secondary institutions (universities, colleges, and polytechnics).
- Federal, Provincial, Territorial and Municipal Governments do not qualify.
- Are committed to paying the student for the role.
- Are willing to provide a quality learning experience to a PSE student.

SWPP Student Eligibility Requirements

- Enrolled as a full-time or part-time domestic student at a Canadian post-secondary education institution.
- A Canadian citizen, permanent resident, or persons to whom refugee protection has been conferred and legally entitled to work in Canada in accordance with relevant provincial or territorial legislation and regulations.

Covid-19 SWP Program Changes



Until March 31, 2021:

- Will cover up to 75% of the wages paid to a student (max. \$7,500).
- The 'Net new' requirement has been waived.
- Hospitals, long-term care facilities, and post-secondary institutions are now eligible as employers.
- Pre-approval.
- Work from home.



SWPP Healthcare Placement Overview



- Due to the current public health crisis caused by COVID-19, Employment and Social Development Canada -- the SWPP funder -- has confirmed an additional **3,000 healthcare placements** for the BioTalent Canada and Magnet SWPP programs (1,500 each).
- BioTalent Canada and Magnet are collaborating to deliver the 3,000 healthcare SWPP placements across Canada and sectors.



Healthcare Definitions

1. Any roles supporting healthcare faculties at post-secondary institutions.
2. Any healthcare role at any organization.
3. Any role (healthcare or non-healthcare) at an organization working in one of the following healthcare segments.

Healthcare Definitions

Where healthcare is defined as Healthcare NAICS code 62 and/or one of the following:

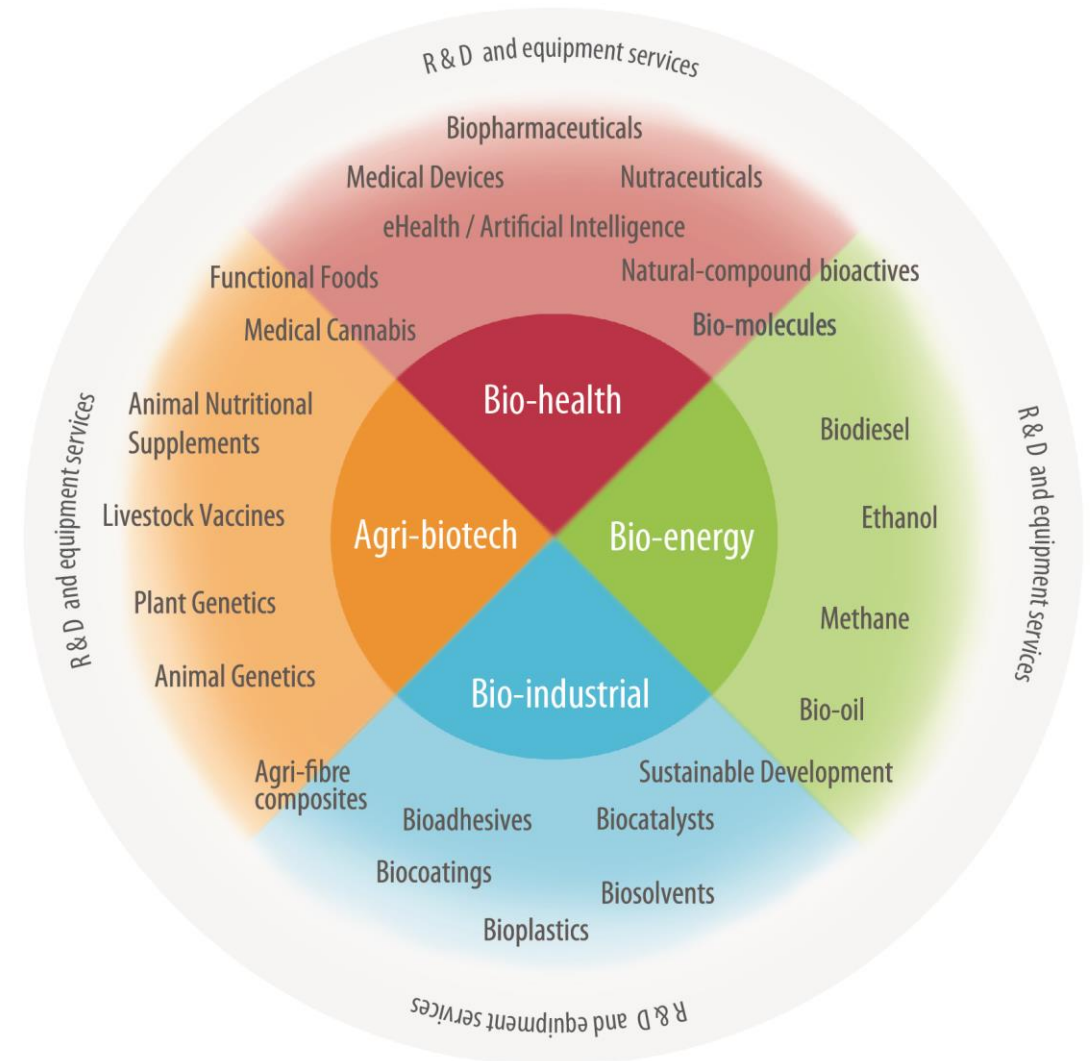
Cardiovascular Perfusion	Health Information Management	Occupational Health and Safety	Paramedical Services (Including Native and Advanced Care)
Cardiovascular Technology	Healthcare Facilities	Occupational Therapist Assistant	Personal Support Workers
Chemical Engineering Technology	Home Healthcare Service	Other Ambulatory Healthcare Service	Pharmaceuticals
Childcare Services	Long Term Care	Other Healthcare Practitioner's Office (Chiropractor, Optometrist, Mental Health practitioner, Physical, Occupational, and Speech Therapists and Audiologists)	Pharmacology
Community Care Facilities for the Elderly	Managed Healthcare	Other Medical and Paramedical Programs	Pharmacy
Community Healthcare	Medical Administration	Other residential care facilities	Physician Assistant Studies
Counselling	Medical and Diagnostic Laboratory	Outpatient Centre (Family Planning Centre, Outpatient Mental Health and Substance Abuse Centre, Community Health Centre, all other Outpatient Care Centre)	Physician Office/Clinic
Dental Office/Clinic	Medical Centre		Physiotherapy
Diagnostic Cardiac Sonography	Medical Device Processing		Practical Nursing
Diagnostic Medical Sonography	Medical Equipment		Pre-hospitalization Emergency Services
Digital Health	Medical Radiation Technology		Public Health
Emergency Medical Services	Medical Transcription		Radiation Protection Technician
Environmental Public Health	Medicine		Radiation Safety
Fitness	Mental Health Services		Social Services
General Medical and Surgical Hospital	Nursing (Registered Nurses, Practical Nurses, Psychiatric Nurses)		
	Nursing Care Facility		
	Nutrition		

BioTalent Canada Applications

Bio-economy or healthcare

- Employers
- Function
- Pre-approval
- Flexible start dates
- Up-to 16 weeks
- Possible 75% of the wage subsidy up-front

biotalent.ca/Co-opFunds



Magnet SWPP Application Information



Employers can apply through Magnet for their healthcare SWPP placements directly.

- *For full employer application details and instructions, please visit:*
<https://swpp.magnet.today/>

Institutions can apply to Magnet to bulk process a large number of placements on-campus or with their employer partners.

- Please contact Jim Babcock at james.babcock@ryerson.ca for more information.

**Magnet will be processing applications for placements and organizations that do not naturally lie in an industry connected to BioTalent.*



Q & A



swpp.magnet.today

James.babcock@Ryerson.ca

Thank you!



www.biotalent.ca

rhenderson@biotalent.ca

